



# Flight Plan & Site Survey

Created using **RPAS Wilco**<sup>®</sup>

Operation Name:	Mission 02-13-2023
Pilot Name:	
Pilot Certificate:	
Flight Start:	February 13, 2023 6:06 PM
Flight End:	February 13, 2023 8:06 PM
Flight Area (Latitude):	46° 11' 37.00" N ( 46.194 )
Flight Area (Longitude):	63° 1' 40.60" W ( -63.028 )
Altitude - Radius:	<b>Alt:</b> 600 ft - <b>Rad:</b> 926.0 m ( 0.5 nm)
Airspace:	UNCONTROLLED
FIR - Contact:	CZQM - 506-867-7173
Weather:	-3.6 Celsius - Snow, Overcast

Please ensure you received all required authorizations prior to flight.

## Disclaimer

This Site Survey was created using RPAS Wilco by AIM Robotics. The flight plan contained is intended only for RPAS flights on the date/time and location specified. The user accepts all responsibility for the accuracy and completeness of the information contained.

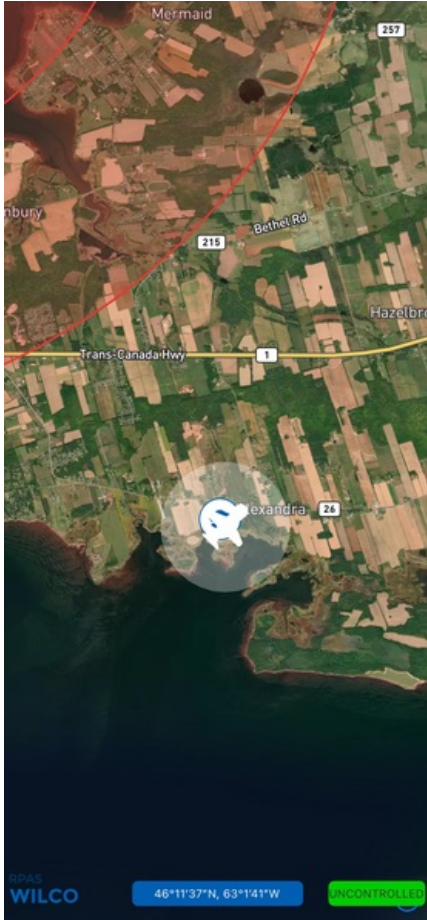
For the complete Terms & Conditions, see

<https://rpswilco.com/#/tnc>



## Included

- Site Survey
- Obstacles (if available)
- Nearby Aerodromes
- Canadian Aviation Regulations
- GFA
- Aerodrome Supplements
  - METAR & TAF (if available)
  - NOTAMs
  - CFS

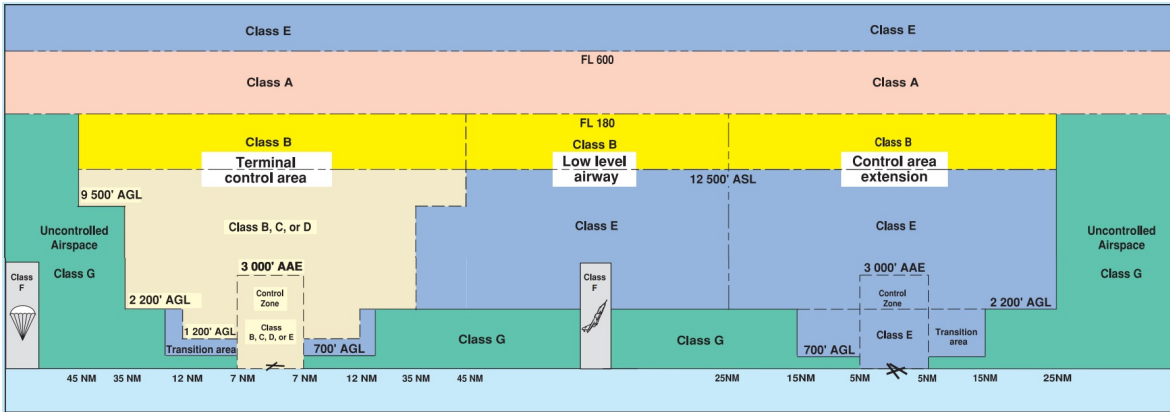
## Flight Map



## MAP Details

	Latitude	Longitude
 <b>MODEL</b>	46° 11' 37.00" N ( 46.194 )	63° 1' 40.60" W ( -63.028 )
 <b>Pilot</b> Randall Hepner	46° 11' 40.60" N ( 46.1946 )	63° 1' 44.20" W ( -63.0289 )

## Airspace Classification



## Overlying Airspaces

Class	Name	Floor	Ceiling
B	CHARLO, NB CAE	12500MSL	18000MSL
E	CHARLO, NB CAE	2200AGL	12500MSL
E	T735 Airway	2200AGL	12500MSL
B	T735 Airway	12500MSL	18000MSL
B	Charlottetown, PE TA	12500MSL	18000MSL
E	Charlottetown, PE TA	700AGL	12500MSL
E	Charlottetown, PE TA	1900MSL	12500MSL
B	Charlottetown, PE TA	12500MSL	18000MSL
E	T612 Airway	2200AGL	12500MSL
B	T612 Airway	12500MSL	18000MSL

## Nearest Aerodromes & Distance from Operation

CHARLOTTETOWN (QUEEN ELIZABETH HOSPITAL) (CDV3 - HELIPORT - Cert)	Lat: 46.256	Long: -63.099	8.832 KM	4.77 NM
CHARLOTTETOWN (CYYG - AERODROME - Cert)	Lat: 46.289	Long: -63.115	12.543 KM	6.77 NM
CABLE HEAD AIRPARK (CCA3 - AERODROME - Reg)	Lat: 46.443	Long: -62.591	43.532 KM	23.51 NM
FOX HARBOUR (CFH4 - AERODROME - Reg)	Lat: 45.87	Long: -63.461	49.117 KM	26.52 NM

## Weather Information for Mission Day

Summary: Cloudy skies throughout the day with snow clearing later.

Condition	Temperature	Feels Like	Precipitation	Visibility	Cloud Coverage	Wind Speed	Humidity
Snow, Overcast	-3.6 Celsius	-11.4 Celsius	63.0 %	11.7 Km	90.8 %	34.6 kph	82.4 %

# Canadian Aviation Regulations

## Division III — General Operating and Flight Rules

For full listing please visit : <https://laws-lois.justice.gc.ca/eng/regulations/SOR-96-433/FullText.html#s-901.27>

### Visual Line-of-sight

- **901.11 (1)** Subject to subsection (2), no pilot shall operate a remotely piloted aircraft system unless the pilot or a visual observer has the aircraft in visual line-of-sight at all times during flight.
- **(2)** A pilot may operate a remotely piloted aircraft system without the pilot or a visual observer having the aircraft in visual line-of-sight if the operation is conducted in accordance with a special flight operations certificate — RPAS issued under section 903.03.

### Procedures

- **901.23 (1)** No pilot shall operate a remotely piloted aircraft system unless the following procedures are established:
  - **(a)** normal operating procedures, including pre-flight, take-off, launch, approach, landing and recovery procedures; and
  - **(b)** emergency procedures, including with respect to
    - **(i)** a control station failure,
    - **(ii)** an equipment failure,
    - **(iii)** a failure of the remotely piloted aircraft,
    - **(iv)** a loss of the command and control link,
    - **(v)** a fly-away, and
    - **(vi)** flight termination.
- **(2)** If the manufacturer of the remotely piloted aircraft system provides instructions with respect to the topics referred to in paragraphs (1)(a) and (b), the procedures established under subsection (1) shall reflect those instructions.
- **(3)** No pilot shall conduct the take-off or launch of a remotely piloted aircraft unless the procedures referred to in subsection (1) are reviewed before the flight by, and are immediately available to, each crew member.
- **(4)** No pilot shall operate a remotely piloted aircraft system unless the operation is conducted in accordance with the procedures referred to in subsection (1).

### Site Survey

**901.27** No pilot shall operate a remotely piloted aircraft system unless, before commencing operations, they determine that the site for take-off, launch, landing or recovery is suitable for the proposed operation by conducting a site survey that takes into account the following factors:

- **(a)** the boundaries of the area of operation;
- **(b)** the type of airspace and the applicable regulatory requirements;
- **(c)** the altitudes and routes to be used on the approach to and departure from the area of operation;
- **(d)** the proximity of manned aircraft operations;
- **(e)** the proximity of aerodromes, airports and heliports;
- **(f)** the location and height of obstacles, including wires, masts, buildings, cell phone towers and wind turbines;
- **(g)** the predominant weather and environmental conditions for the area of operation; and
- **(h)** the horizontal distances from persons not involved in the operation.

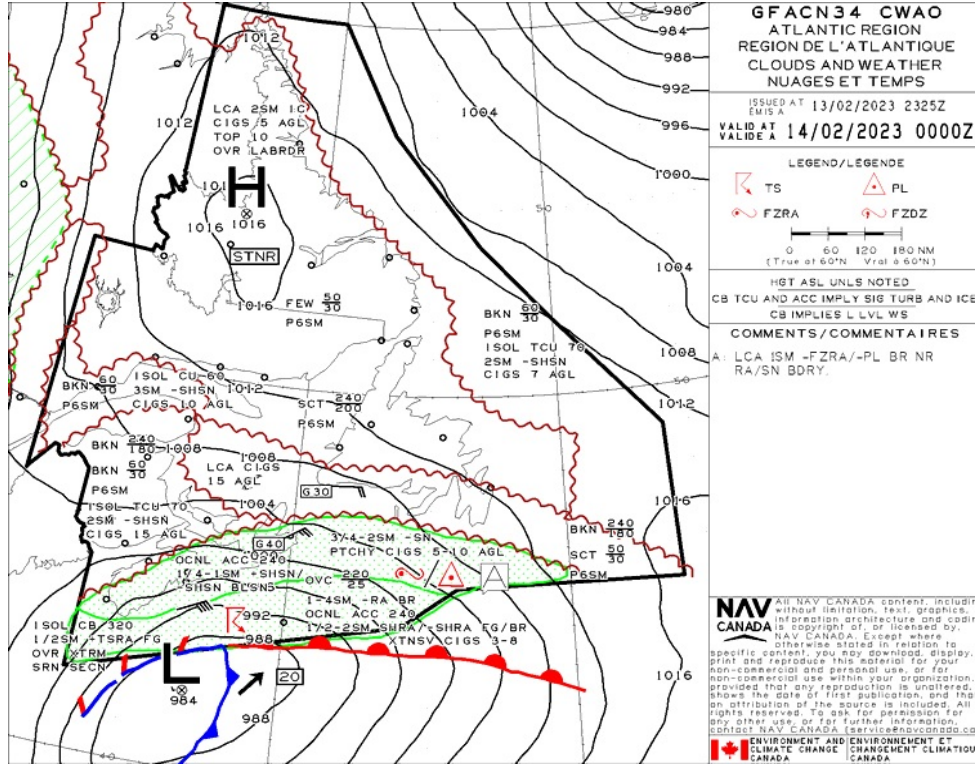
### Operations at or in the Vicinity of an Aerodrome, Airport or Heliport

- **901.47 (1)** No pilot shall operate a remotely piloted aircraft at or near an aerodrome that is listed in the *Canada Flight Supplement* or the *Water Aerodrome Supplement* in a manner that could interfere with an aircraft operating in the established traffic pattern.
- **(2)** Subject to section 901.73, no pilot shall operate a remotely piloted aircraft at a distance of less than
  - **(a)** three nautical miles from the centre of an airport; and
  - **(b)** one nautical mile from the centre of a heliport.
- **(3)** No pilot shall operate a remotely piloted aircraft at a distance of less than three nautical miles from the centre of an aerodrome operated under the authority of the Minister of National Defence unless the operation is conducted in accordance with a special flight operations certificate — RPAS issued under section 903.03.

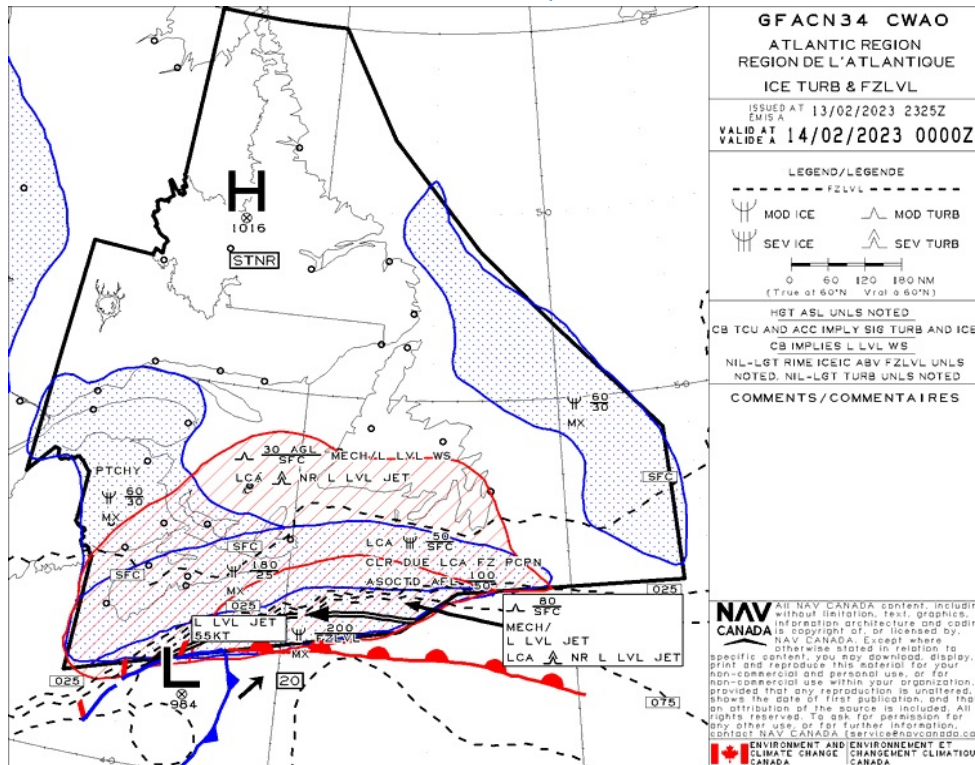
### Records

- **901.48 (1)** Every owner of a remotely piloted aircraft system shall keep the following records:
  - **(a)** a record containing the names of the pilots and other crew members who are involved in each flight and, in respect of the system, the time of each flight or series of flights; and
  - **(b)** a record containing the particulars of any mandatory action and any other maintenance action, modification or repair performed on the system, including
    - **(i)** the names of the persons who performed them,
    - **(ii)** the dates they were undertaken,
    - **(iii)** in the case of a modification, the manufacturer, model and a description of the part or equipment installed to modify the system, and
    - **(iv)** if applicable, any instructions provided to complete the work.
- **(2)** Every owner of a remotely piloted aircraft system shall ensure that the records referred to in subsection (1) are made available to the Minister on request and are retained for a period of
  - **(a)** in the case of the records referred to in paragraph (1)(a), 12 months after the day on which they are created; and
  - **(b)** in the case of the records referred to in paragraph (1)(b), 24 months after the day on which they are created.
- **(3)** Every owner of a remotely piloted aircraft system who transfers ownership of the system to another person shall, at the time of transfer, also deliver to that person all of the records referred to in paragraph (1)(b).

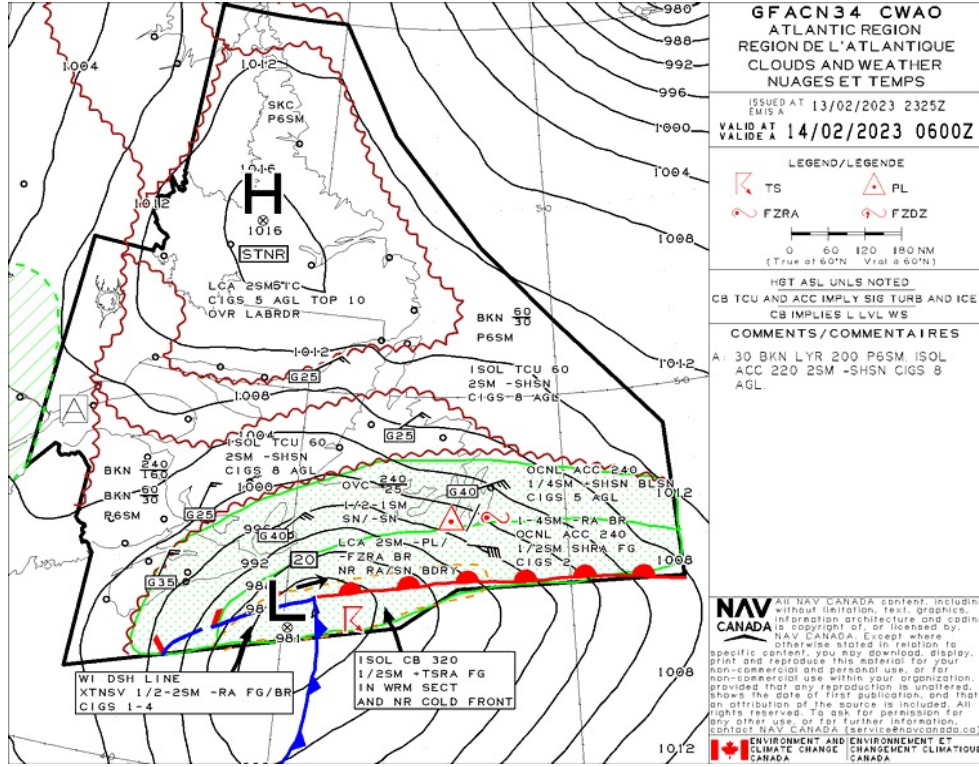
## GFA Issue time + 00 hr - CLOUDS AND WEATHER



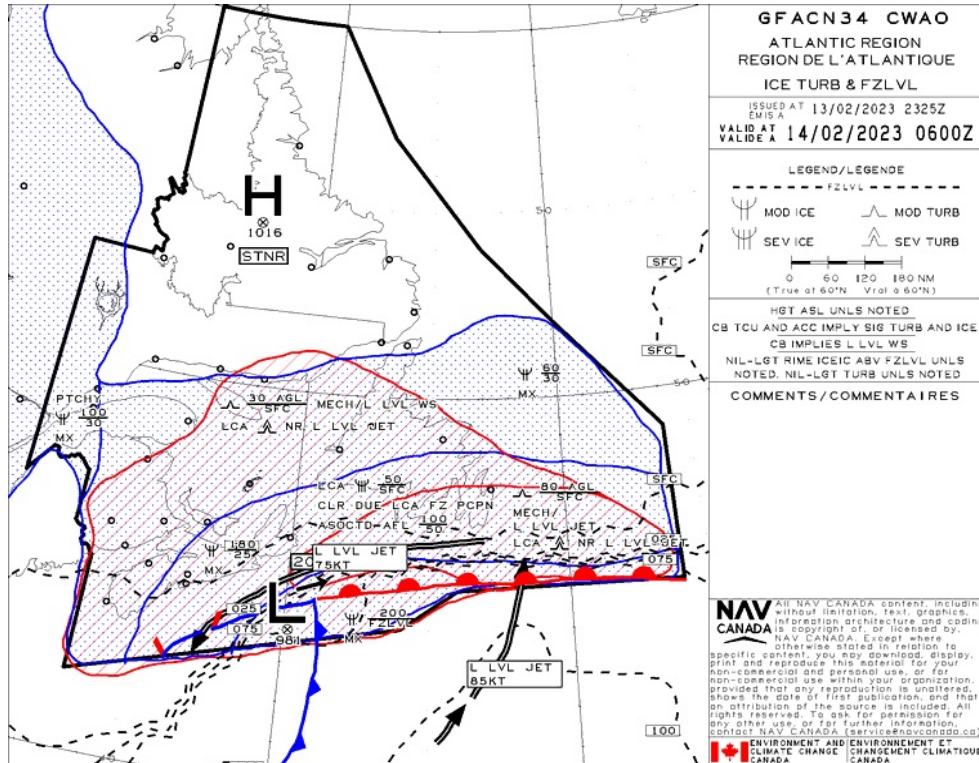
## GFA Issue time + 00 hr - TURBULENCE, ICING AND FREEZING LEVEL



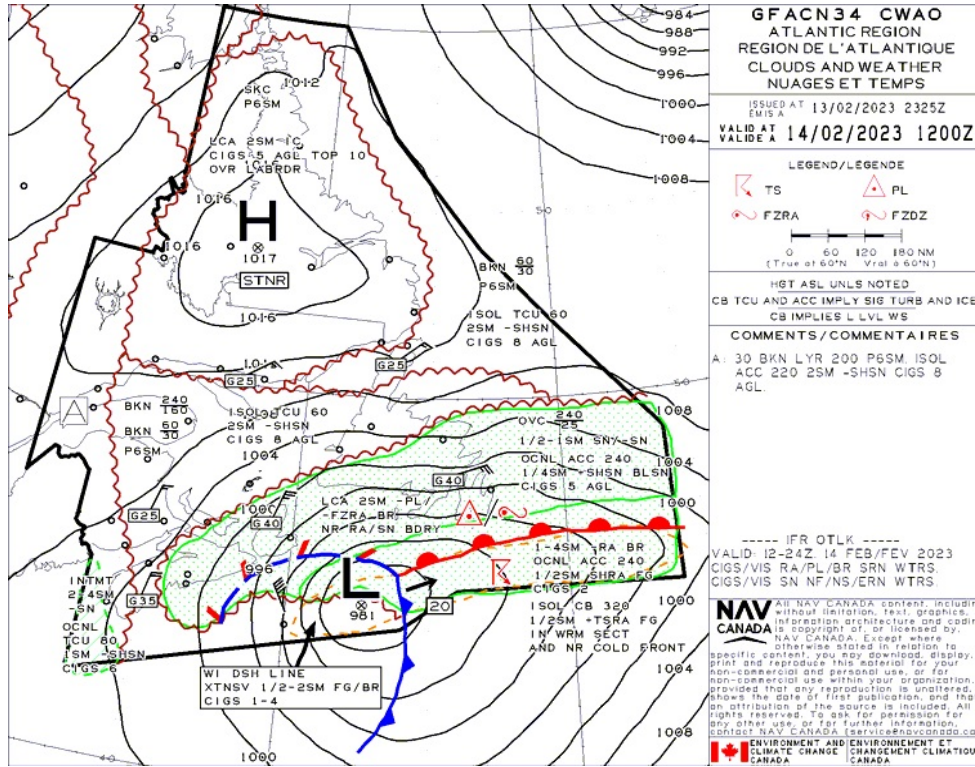
## GFA Issue time + 06 hr - CLOUDS AND WEATHER



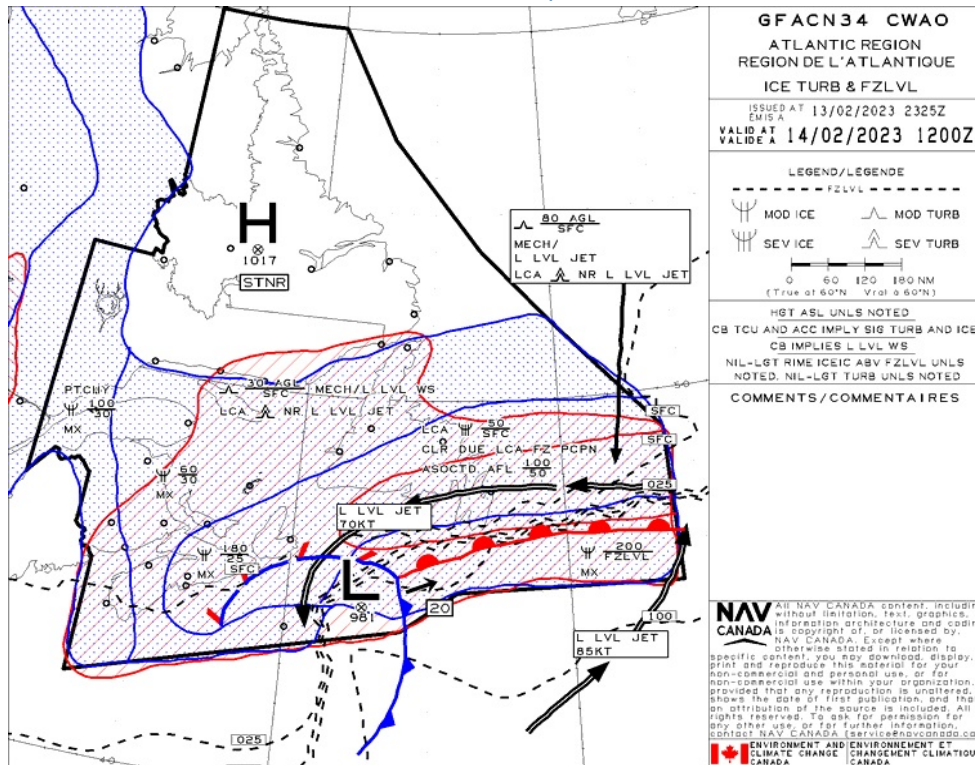
## GFA Issue time + 06 hr - TURBULENCE, ICING AND FREEZING LEVEL



## GFA Issue time + 12 hr - CLOUDS AND WEATHER



## GFA Issue time + 12 hr - TURBULENCE, ICING AND FREEZING LEVEL



## CHARLOTTETOWN (QUEEN ELIZABETH HOSPITAL) - CDV3 - Cert

### NOTAM

(K0471/23 NOTAMR K3677/22  
Q) CZQM/QBCE/IV/M/AE/000/005/4618N06311W005  
A) CYYG B) 2302061725 C) 2304131915  
D) DAILY 1100-1915  
E) MOBILE CRANE WITHIN 150FT RADIUS CENTRED ON 461753N 0631049W APRX  
12410FT BFR THR 10 AND 3990FT NORTH EXTENDED RCL. 200FT AGL 411FT  
AMSL. NOT LGTD, NOT PAINTED.)

(H0415/23 NOTAMR H0358/23  
Q) CZQM/QCAAS/IV/B/E/000/999/4528N06624W200  
A) CZQM B) 2302101235 C) 2302242359  
E) MONCTON CENTRE PERIPHERAL STATION (PAL)  
135.5MHZ AT FREDERICTON AND SAINT JOHN U/S)

(H0414/23 NOTAMR H0357/23  
Q) CZQM/QCAAS/IV/B/E/000/180/4528N06624W200  
A) CZQM B) 2302101235 C) 2302242359  
E) MONCTON CENTRE PERIPHERAL STATION (PAL)  
124.3MHZ AT FREDERICTON AND SAINT JOHN U/S)

(K0533/23 NOTAMR K3999/22  
Q) CZQM/QMNL/IV/NBO/A/000/999/4617N06307W005  
A) CYYG B) 2302131425 C) 2303011700EST  
E) APN I AVBL PPR 902-566-7997. EXC FOR COMMERCIAL ACFT)

(H0055/23 NOTAMR H3562/22  
Q) CZXX/QECH/IV/NBO/E/000/999/5440N06941W999  
A) CZUL CZQM CZQX B) 2301111839 C) 2304121800EST  
E) ALL ACFT, REGARDLESS OF THE STATE OF REGISTRY, DIRECTLY OR  
INDIRECTLY OWNED, CHARTERED, LEASED, OPERATED OR OTHERWISE  
CONTROLLED BY A PERSON CONNECTED WITH EITHER THE RUSSIAN  
FEDERATION OR OF BELARUS OR BY A CORPORATION OR ENTITY THAT IS  
INCORPORATED OR FORMED UNDER THE LAWS OF THE RUSSIAN FEDERATION  
OR BELARUS, AND ALL OPERATORS HOLDING AN AIR OPERATOR CERTIFICATE  
(AOC) ISSUED BY RUSSIAN FEDERATION AND/OR BELARUSIAN AUTHORITIES  
ARE PROHIBITED TO ENTER, EXIT OR OVERFLY CANADA'S TERRITORIAL  
AIRSPACE (INCLUDING FLT WITHIN 12NM OF CANADA'S COASTS).  
EXCEPTIONS PERMITTED FOR ACFT EXPERIENCING INFLIGHT EMERG.

ALL AUTH OBTAINED PRIOR TO 27 FEB 2022 FOR ACFT AND OPS SUBJECT  
TO THIS NOTAM ARE REVOKED.

HUMANITARIAN, SAR, MEDEVAC AND ANY OTHER FLT SEEKING AN EXCEPTION  
TO THIS RESTRICTION MUST RECEIVE AUTH GRANTED AFTER 27 FEB 2022  
FM THE MINISTER OF TRANSPORT TO OPERATE IN CANADA'S TERRITORIAL  
AIRSPACE. AFFECTED ACFT WISHING TO OBTAIN SUCH AN AUTH OR CLR  
INTO CANADA'S TERRITORIAL AIRSPACE MAY APPLY TO THE MINISTER OF  
TRANSPORT AT 1-877-992-6853 OR 1-613-992-6853 OR BY EMAIL AT  
OPERATIONS.AVIATION(AT)TC.GC.CA.

FR:  
TOUS AERONEFS, INDEPENDAMMENT DE L'ETAT D'IMMATRICULATION,  
DIRECTEMENT OU INDIRECTEMENT POSSEDES, AFFRETES, LOUES, EXPLOITES  
OU CONTROLES PAR UNE PERSONNE LIEE AVEC LA FEDERATION RUSSE OU DU  
BELARUS OU PAR UNE SOCIETE OU UNE ENTITE INCORPOREE OU FORMEE EN  
VERTU DES LOIS DE LA FEDERATION RUSSE OU DU BELARUS, ET TOUS LES  
EXPLOITANTS DETENANT UN CERTIFICAT D'EXPLOITANT AERIEN (CEA) EMIS  
PAR LA FEDERATION RUSSE ET/OU LES AUTORITES DU BELARUS SONT  
INTERDITS D'ENTRER,  
DE SORTIR OU DE SURVOLER L'ESPACE AERIEN  
TERRITORIAL DU CANADA (Y COMPRIS LE VOL A MOINS DE 12 MILES  
NAUTIQUES DES COTES CANADIENNES). EXCEPTIONS PERMISES POUR LES  
AERONEFS SUBISSANT DES URGENCES EN VOL.

TOUTES LES AUTORISATIONS OBTENUES AVANT LE 27 FEB 2022 POUR LES  
AERONEFS ET LES OPERATIONS SOUMIS A CE NOTAM SONT REVOQUEES.

LES VOLS HUMANITAIRES, SAR, MEDEVAC ET TOUT AUTRE VOL RECHERCHANT  
UNE EXCEPTION A CETTE RESTRICTION DOIVENT RECEVOIR UNE  
AUTORISATION ACCORDEE APRES LE 27 FEB 2022 PAR LE MINISTRE DES  
TRANSPORTS POUR OPERER DANS L'ESPACE AERIEN TERRITORIAL DU  
CANADA. LES AERONEFS AFFECTES SOUHAITANT OBTENIR UNE TELLE  
AUTORISATION OU AUTORISATION D'ENTRER DANS L'ESPACE AERIEN  
TERRITORIAL CANADIEN PEUVENT FAIRE UNE DEMANDE AU MINISTRE DES  
TRANSPORTS AU 1-877-992-6853 OU 1-613-992-6853 OU PAR COURRIEL A  
OPERATIONS.AVIATION(AT)TC.GC.CA)

(H0376/23 NOTAMR H0375/23  
Q) CZQM/QCAAS/IV/B/AE/000/999/4459N06455W999  
A) CYZX B) 2302071413 C) 2303312359  
E) TERMINAL (TML) FREQ 120.6MHZ AND 335.9MHZ U/S  
USE FREQ 118.1MHZ AND 258.6MHZ)

(K0111/23 NOTAMR K2915/22  
Q) CZQM/QFAAH/IV/NBO/A/000/999/4617N06307W005  
A) CYYG B) 2301111954 C) PERM  
E) AMEND PUBLICATIONS:  
OPR: AD HR OF OPS TO READ: 0900-0415Z (DT 0800-0315Z)  
SERVICES: ARFF HRS TO READ: 0900-0415Z (DT 0800-0315Z)  
RWY DATA: RCR HRS TO READ: 0900-0415Z (DT 0800-0315Z)

(K0488/23 NOTAMR  
Q) CZQM/QFTAS/I/B/A/000/999/4617N06307W005



A) CYYG B) 2302071747 C) 2302172359  
E) RVR 03 NOT AVBL)

(K0475/23 NOTAMR K3678/22

Q) CZQM/QPICH/I/NB0/A/000/999/4617N06307W005

A) CYYG B) 2302071100 C) 2304131915

D) DAILY 1100-1915

E) DUE CRANE:

RNAV (GNSS) Z RWY 10 APCH:

LNAV MINIMA TO READ: 640 (482) 1 1/2

PUBLISHED DIST/ALT TABLE NOT VALID

PUBLISHED CONSTANT DESCENT ANGLE NOT VALID

VOR/DME RWY 10 APCH:

VOR/DME MINIMA TO READ: 680 (522) 1 3/4

PUBLISHED DIST/ALT TABLE NOT VALID

PUBLISHED CONSTANT DESCENT ANGLE NOT VALID)



# Flight Plan & Site Survey

CHARLOTTETOWN - CYYG - Cert

## METAR

METAR CYYG 140000Z 04020G27KT 10SM OVC008 M02/M04 A2957 RMK SC8 PRESFR SLP019=		
<b>METAR</b>	<b>LOCATION</b> CYYG - CHARLOTTETOWN/PE	<b>DATE - TIME</b> 14 FEBRUARY 2023 - 0000 UTC
<b>WIND</b> 40 TRUE @ 20 KNOTS <b>GUSTS</b> 27 KNOTS	<b>VISIBILITY</b> 10 STAT. MILES	<b>RUNWAY VISUAL RANGE</b>
<b>WEATHER</b>	<b>CLOUDINESS</b> OVERCAST 800 FT	<b>TEMP / DEWPOINT</b> -2 C / -4 C
<b>ALTIMETER</b> 29.57 IN HG	<b>RECENT WEATHER</b>	<b>WIND SHEAR</b>

METAR CYYG 132200Z 05017KT 15SM SCT008 OVC160 M02/M04 A2964 RMK SF3AC5 SLP041=		
<b>METAR</b>	<b>LOCATION</b> CYYG - CHARLOTTETOWN/PE	<b>DATE - TIME</b> 13 FEBRUARY 2023 - 2200 UTC
<b>WIND</b> 50 TRUE @ 17 KNOTS	<b>VISIBILITY</b> 15 STAT. MILES	<b>RUNWAY VISUAL RANGE</b>
<b>WEATHER</b>	<b>CLOUDINESS</b> SCATTERED CLOUDS (3/8 - 4/8) 800 FT OVERCAST 16000 FT	<b>TEMP / DEWPOINT</b> -2 C / -4 C
<b>ALTIMETER</b> 29.64 IN HG	<b>RECENT WEATHER</b>	<b>WIND SHEAR</b>

## NOTAM

(K0111/23 NOTAMR K2915/22  
 Q) CZQM/QFAAH/IV/NBO/A/000/999/4617N06307W005  
 A) CYYG B) 2301111954 C) PERM  
 E) AMEND PUBLICATIONS:  
 OPR: AD HR OF OPS TO READ: 0900-0415Z (DT 0800-0315Z)  
 SERVICES: ARFF HRS TO READ: 0900-0415Z (DT 0800-0315Z)  
 RWY DATA: RCR HRS TO READ: 0900-0415Z (DT 0800-0315Z)

(K0488/23 NOTAMN  
 Q) CZQM/QFTAS/I/B/A/000/999/4617N06307W005  
 A) CYYG B) 2302071747 C) 2302172359  
 E) RVR 03 NOT AVBL)

(K0475/23 NOTAMR K3678/22  
 Q) CZQM/QPICH/I/NBO/A/000/999/4617N06307W005  
 A) CYYG B) 2302071100 C) 2304131915  
 D) DAILY 1100-1915  
 E) DUE CRANE:

RNAV (GNSS) Z RWY 10 APCH:  
 LNAV MINIMA TO READ: 640 (482) 1 1/2  
 PUBLISHED DIST/ALT TABLE NOT VALID  
 PUBLISHED CONSTANT DESCENT ANGLE NOT VALID

VOR/DME RWY 10 APCH:

VOR/DME MINIMA TO READ: 680 (522) 1 3/4  
PUBLISHED DIST/ALT TABLE NOT VALID  
PUBLISHED CONSTANT DESCENT ANGLE NOT VALID)

(K0471/23 NOTAMR K3677/22  
Q) CZQM/QBCE/IV/M/AE/000/005/4618N06311W005  
A) CYYG B) 2302061725 C) 2304131915  
D) DAILY 1100-1915  
E) MOBILE CRANE WITHIN 150FT RADIUS CENTRED ON 461753N 0631049W APRX  
12410FT BFR THR 10 AND 3900FT NORTH EXTENDED RCL. 200FT AGL 411FT  
ANSL. NOT LGTD, NOT PAINTED.)

(A2224/23 NOTAMR A2117/23  
Q) CZQM/QFAXX/IV/NBO/A/000/999/4617N06307W005  
A) CYYG B) 2302132356 C) 2302140756  
E) RSC 03 6/6/6 DRY, DRY, DRY. VALID FEB 13 2350 - FEB 14 0750.

RSC 21 6/6/6 DRY, DRY, DRY. VALID FEB 13 2350 - FEB 14 0750.

RSC 10 6/6/6 DRY, DRY, DRY. VALID FEB 13 2352 - FEB 14 0752.

RSC 28 6/6/6 DRY, DRY, DRY. VALID FEB 13 2352 - FEB 14 0752.

ADDN NON-GRF/TALPA INFO:

RMK: TWY TWY ALPHA, BRAVO, CHARLIE, 202302132349, DRY.  
RMK: APN APN APRON I, APRON II, 202302132350, DRY.)

(H0415/23 NOTAMR H0358/23  
Q) CZQM/QCAAS/IV/B/E/000/999/4528N06624W200  
A) CZQM B) 2302101235 C) 2302242359  
E) MONCTON CENTRE PERIPHERAL STATION (PAL)  
135.5MHZ AT FREDERICTON AND SAINT JOHN U/S)

(H0414/23 NOTAMR H0357/23  
Q) CZQM/QCAAS/IV/B/E/000/180/4528N06624W200  
A) CZQM B) 2302101235 C) 2302242359  
E) MONCTON CENTRE PERIPHERAL STATION (PAL)  
124.3MHZ AT FREDERICTON AND SAINT JOHN U/S)

(K0533/23 NOTAMR K3999/22  
Q) CZQM/QMMLT/IV/NBO/A/000/999/4617N06307W005  
A) CYYG B) 2302131425 C) 2303011700EST  
E) APN I AVBL PPR 902-566-7997. EXC FOR COMMERCIAL ACFT)

(H0055/23 NOTAMR H3562/22  
Q) CZXX/QOECH/IV/NBO/E/000/999/5440N06941W999  
A) CZUL CZQM CZQX B) 2301111839 C) 2304121800EST  
E) ALL ACFT, REGARDLESS OF THE STATE OF REGISTRY, DIRECTLY OR  
INDIRECTLY OWNED, CHARTERED, LEASED, OPERATED OR OTHERWISE  
CONTROLLED BY A PERSON CONNECTED WITH EITHER THE RUSSIAN  
FEDERATION OR OF BELARUS OR BY A CORPORATION OR ENTITY THAT IS  
INCORPORATED OR FORMED UNDER THE LAWS OF THE RUSSIAN FEDERATION  
OR BELARUS, AND ALL OPERATORS HOLDING AN AIR OPERATOR CERTIFICATE  
(AOC) ISSUED BY RUSSIAN FEDERATION AND/OR BELARUSIAN AUTHORITIES  
ARE PROHIBITED TO ENTER, EXIT OR OVERFLY CANADA'S TERRITORIAL  
AIRSPACE (INCLUDING FLT WITHIN 12NM OF CANADA'S COASTS).  
EXCEPTIONS PERMITTED FOR ACFT EXPERIENCING INFLIGHT EMERG.

ALL AUTH OBTAINED PRIOR TO 27 FEB 2022 FOR ACFT AND OPS SUBJECT  
TO THIS NOTAM ARE REVOKED.

HUMANITARIAN, SAR, MEDEVAC AND ANY OTHER FLT SEEKING AN EXCEPTION  
TO THIS RESTRICTION MUST RECEIVE AUTH GRANTED AFTER 27 FEB 2022  
FM THE MINISTER OF TRANSPORT TO OPERATE IN CANADA'S TERRITORIAL  
AIRSPACE. AFFECTED ACFT WISHING TO OBTAIN SUCH AN AUTH OR CLR  
INTO CANADA'S TERRITORIAL AIRSPACE MAY APPLY TO THE MINISTER OF  
TRANSPORT AT 1-877-992-6853 OR 1-613-992-6853 OR BY EMAIL AT  
OPERATIONS.AVIATION(AT)TC.GC.CA.

FR:  
TOUS AERONEFS, INDEPENDAMMENT DE L'ETAT D'IMMATRICULATION,  
DIRECTEMENT OU INDIRECTEMENT POSSEDES, AFFRETES, LOUES, EXPLOITES  
OU CONTROLES PAR UNE PERSONNE LIEE AVEC LA FEDERATION RUSSE OU DU  
BELARUS OU PAR UNE SOCIETE OU UNE ENTITE INCORPOREE OU FORMEE EN  
VERTU DES LOIS DE LA FEDERATION RUSSE OU DU BELARUS, ET TOUS LES  
EXPLOITANTS DETENANT UN CERTIFICAT D'EXPLOITANT AERIEN (CEA) EMIS  
PAR LA FEDERATION RUSSE ET/OU LES AUTORITES DU BELARUS SONT  
INTERDITS D'ENTRER,  
DE SORTIR OU DE SURVOLER L'ESPACE AERIEN  
TERRITORIAL DU CANADA (Y COMPRIS LE VOL A MOINS DE 12 MILES  
NAUTIQUES DES COTES CANADIENNES). EXCEPTIONS PERMISES POUR LES  
AERONEFS SUBISSANT DES URGENCES EN VOL.

TOUTES LES AUTORISATIONS OBTENUES AVANT LE 27 FEB 2022 POUR LES  
AERONEFS ET LES OPERATIONS SOUMIS A CE NOTAM SONT REVOQUEES.

LES VOLS HUMANITAIRES, SAR, MEDEVAC ET TOUT AUTRE VOL RECHERCHANT  
UNE EXCEPTION A CETTE RESTRICTION DOIVENT RECEVOIR UNE  
AUTORISATION ACCORDEE APRES LE 27 FEB 2022 PAR LE MINISTRE DES  
TRANSPORTS POUR OPERER DANS L'ESPACE AERIEN TERRITORIAL DU  
CANADA. LES AERONEFS AFFECTES SOUHAITANT OBTENIR UNE TELLE  
AUTORISATION OU AUTORISATION D'ENTRER DANS L'ESPACE AERIEN  
TERRITORIAL CANADIEN PEUVENT FAIRE UNE DEMANDE AU MINISTRE DES  
TRANSPORTS AU 1-877-992-6853 OU 1-613-992-6853 OU PAR COURRIEL A  
OPERATIONS.AVIATION(AT)TC.GC.CA)

(H0376/23 NOTAMR H0375/23  
Q) CZQM/QCAAS/IV/B/AE/000/999/4459N06455W999  
A) CYZX B) 2302071413 C) 2303312359  
E) TERMINAL (TML) FREQ 120.6MHZ AND 335.9MHZ U/S  
USE FREQ 118.1MHZ AND 258.6MHZ)



# Flight Plan & Site Survey

## CABLE HEAD AIRPARK - CCA3 - Reg

### NOTAM

(H0376/23 NOTAMR H0375/23  
Q) CZQM/QCAAS/IV/B/AE/000/999/4459N06455W999  
A) CYZX B) 2302071413 C) 2303312359  
E) TERMINAL (TML) FREQ 120.6MHZ AND 335.9MHZ U/S  
USE FREQ 118.1MHZ AND 258.6MHZ)

(H0415/23 NOTAMR H0358/23  
Q) CZQM/QCAAS/IV/B/E/000/999/4528N06624W200  
A) CZQM B) 2302101235 C) 2302242359  
E) MONCTON CENTRE PERIPHERAL STATION (PAL)  
135.5MHZ AT FREDERICTON AND SAINT JOHN U/S)

(H0414/23 NOTAMR H0357/23  
Q) CZQM/QCAAS/IV/B/E/000/180/4528N06624W200  
A) CZQM B) 2302101235 C) 2302242359  
E) MONCTON CENTRE PERIPHERAL STATION (PAL)  
124.3MHZ AT FREDERICTON AND SAINT JOHN U/S)

(N0383/23 NOTAMN  
Q) CZQM/QCAAS/IV/B/E/000/999/4722N06154W070  
A) CYGR B) 2302141200 C) 2302142100  
E) QUEBEC RDO REMOTE COM OUTLET (RCO) 123.55MHZ AND 126.7MHZ AT  
ILES-DE-LA-MADELEINE U/S

FR:  
QUEBEC RDO INSTALLATION RDO TELECOMMANDEE (RCO) 123.55MHZ ET  
126.7MHZ A ILES-DE-LA-MADELEINE U/S)

(H0055/23 NOTAMR H3562/22  
Q) CZXX/QOEC/IV/NBO/E/000/999/5440N06941W999  
A) CZUL CZQM CZQX B) 2301111839 C) 2304121800EST  
E) ALL ACFT, REGARDLESS OF THE STATE OF REGISTRY, DIRECTLY OR  
INDIRECTLY OWNED, CHARTERED, LEASED, OPERATED OR OTHERWISE  
CONTROLLED BY A PERSON CONNECTED WITH EITHER THE RUSSIAN  
FEDERATION OR OF BELARUS OR BY A CORPORATION OR ENTITY THAT IS  
INCORPORATED OR FORMED UNDER THE LAWS OF THE RUSSIAN FEDERATION  
OR BELARUS, AND ALL OPERATORS HOLDING AN AIR OPERATOR CERTIFICATE  
(AOC) ISSUED BY RUSSIAN FEDERATION AND/OR BELARUSIAN AUTHORITIES  
ARE PROHIBITED TO ENTER, EXIT OR OVERFLY CANADA'S TERRITORIAL  
AIRSPACE (INCLUDING FLT WITHIN 12NM OF CANADA'S COASTS).  
EXCEPTIONS PERMITTED FOR ACFT EXPERIENCING INFLIGHT EMERG.

ALL AUTH OBTAINED PRIOR TO 27 FEB 2022 FOR ACFT AND OPS SUBJECT  
TO THIS NOTAM ARE REVOKED.

HUMANITARIAN, SAR, MEDEVAC AND ANY OTHER FLT SEEKING AN EXCEPTION  
TO THIS RESTRICTION MUST RECEIVE AUTH GRANTED AFTER 27 FEB 2022  
FM THE MINISTER OF TRANSPORT TO OPERATE IN CANADA'S TERRITORIAL  
AIRSPACE. AFFECTED ACFT WISHING TO OBTAIN SUCH AN AUTH OR CLR  
INTO CANADA'S TERRITORIAL AIRSPACE MAY APPLY TO THE MINISTER OF  
TRANSPORT AT 1-877-992-6853 OR 1-613-992-6853 OR BY EMAIL AT  
OPERATIONS.AVIATION(AT)TC.GC.CA.

FR:  
TOUS AERONEFS, INDEPENDAMMENT DE L'ETAT D'IMMATRICULATION,  
DIRECTEMENT OU INDIRECTEMENT POSSEDES, AFFRETES, LOUES, EXPLOITES  
OU CONTROLES PAR UNE PERSONNE LIEE AVEC LA FEDERATION RUSSE OU DU  
BELARUS OU PAR UNE SOCIETE OU UNE ENTITE INCORPOREE OU FORMEE EN  
VERTU DES LOIS DE LA FEDERATION RUSSE OU DU BELARUS, ET TOUS LES  
EXPLOITANTS DETENANT UN CERTIFICAT D'EXPLOITANT AERIEN (CEA) EMIS  
PAR LA FEDERATION RUSSE ET/OU LES AUTORITES DU BELARUS SONT  
INTERDITS D'ENTRER,  
DE SORTIR OU DE SURVOLER L'ESPACE AERIEN  
TERRITORIAL DU CANADA (Y COMPRIS LE VOL A MOINS DE 12 MILES  
NAUTIQUES DES COTES CANADIENNES). EXCEPTIONS PERMISES POUR LES  
AERONEFS SUBISSANT DES URGENCES EN VOL.

TOUTES LES AUTORISATIONS OBTENUES AVANT LE 27 FEB 2022 POUR LES  
AERONEFS ET LES OPERATIONS SOUMIS A CE NOTAM SONT REVOQUEES.

LES VOLS HUMANITAIRES, SAR, MEDEVAC ET TOUT AUTRE VOL RECHERCHANT  
UNE EXCEPTION A CETTE RESTRICTION DOIVENT RECEVOIR UNE  
AUTORISATION ACCORDEE APRES LE 27 FEB 2022 PAR LE MINISTRE DES  
TRANSPORTS POUR OPERER DANS L'ESPACE AERIEN TERRITORIAL DU  
CANADA. LES AERONEFS AFFECTES SOUHAITANT OBTENIR UNE TELLE  
AUTORISATION OU AUTORISATION D'ENTRER DANS L'ESPACE AERIEN  
TERRITORIAL CANADIEN PEUVENT FAIRE UNE DEMANDE AU MINISTRE DES  
TRANSPORTS AU 1-877-992-6853 OU 1-613-992-6853 OU PAR COURRIEL A  
OPERATIONS.AVIATION(AT)TC.GC.CA)



## FOX HARBOUR - CFH4 - Reg

### NOTAM

(H0055/23 NOTAMR H3562/22

Q) CZXX/QOEC/IV/NBO/E/000/999/5440N06941W999

A) CZUL CZQM CZQX B) 2301111839 C) 2304121800EST

E) ALL ACFT, REGARDLESS OF THE STATE OF REGISTRY, DIRECTLY OR INDIRECTLY OWNED, CHARTERED, LEASED, OPERATED OR OTHERWISE CONTROLLED BY A PERSON CONNECTED WITH EITHER THE RUSSIAN FEDERATION OR OF BELARUS OR BY A CORPORATION OR ENTITY THAT IS INCORPORATED OR FORMED UNDER THE LAWS OF THE RUSSIAN FEDERATION OR BELARUS, AND ALL OPERATORS HOLDING AN AIR OPERATOR CERTIFICATE (AOC) ISSUED BY RUSSIAN FEDERATION AND/OR BELARUSIAN AUTHORITIES ARE PROHIBITED TO ENTER, EXIT OR OVERFLY CANADA'S TERRITORIAL AIRSPACE (INCLUDING FLT WITHIN 12NM OF CANADA'S COASTS). EXCEPTIONS PERMITTED FOR ACFT EXPERIENCING INFLIGHT EMERG.

ALL AUTH OBTAINED PRIOR TO 27 FEB 2022 FOR ACFT AND OPS SUBJECT TO THIS NOTAM ARE REVOKED.

HUMANITARIAN, SAR, MEDEVAC AND ANY OTHER FLT SEEKING AN EXCEPTION TO THIS RESTRICTION MUST RECEIVE AUTH GRANTED AFTER 27 FEB 2022 FM THE MINISTER OF TRANSPORT TO OPERATE IN CANADA'S TERRITORIAL AIRSPACE. AFFECTED ACFT WISHING TO OBTAIN SUCH AN AUTH OR CLR INTO CANADA'S TERRITORIAL AIRSPACE MAY APPLY TO THE MINISTER OF TRANSPORT AT 1-877-992-6853 OR 1-613-992-6853 OR BY EMAIL AT OPERATIONS.AVIATION(AT)TC.GC.CA.

FR:

TOUS AERONEFS, INDEPENDAMMENT DE L'ETAT D'IMMATRICULATION, DIRECTEMENT OU INDIRECTEMENT POSSEDES, AFFRETES, LOUES, EXPLOITES OU CONTROLES PAR UNE PERSONNE LIEE AVEC LA FEDERATION RUSSE OU DU BELARUS OU PAR UNE SOCIETE OU UNE ENTITE INCORPOREE OU FORMEE EN VERTU DES LOIS DE LA FEDERATION RUSSE OU DU BELARUS, ET TOUS LES EXPLOITANTS DETENANT UN CERTIFICAT D'EXPLOITANT AERIEN (CEA) EMIS PAR LA FEDERATION RUSSE ET/OU LES AUTORITES DU BELARUS SONT INTERDITS D'ENTRER, DE SORTIR OU DE SURVOLER L'ESPACE AERIEN TERRITORIAL DU CANADA (Y COMPRIS LE VOL A MOINS DE 12 MILES NAUTIQUES DES COTES CANADIENNES). EXCEPTIONS PERMISES POUR LES AERONEFS SUBISSANT DES URGENCES EN VOL.

TOUTES LES AUTORISATIONS OBTENUES AVANT LE 27 FEB 2022 POUR LES AERONEFS ET LES OPERATIONS SOUMIS A CE NOTAM SONT REVOQUEES.

LES VOLS HUMANITAIRES, SAR, MEDEVAC ET TOUT AUTRE VOL RECHERCHANT UNE EXCEPTION A CETTE RESTRICTION DOIVENT RECEVOIR UNE AUTORISATION ACCORDEE APRES LE 27 FEB 2022 PAR LE MINISTRE DES TRANSPORTS POUR OPERER DANS L'ESPACE AERIEN TERRITORIAL DU CANADA. LES AERONEFS AFFECTES SOUHAITANT OBTENIR UNE TELLE AUTORISATION OU AUTORISATION D'ENTRER DANS L'ESPACE AERIEN TERRITORIAL CANADIEN PEUVENT FAIRE UNE DEMANDE AU MINISTRE DES TRANSPORTS AU 1-877-992-6853 OU 1-613-992-6853 OU PAR COURRIEL A OPERATIONS.AVIATION(AT)TC.GC.CA)

(H0376/23 NOTAMR H0375/23

Q) CZQM/QCAAS/IV/B/AE/000/999/4459N06455W999

A) CVZX B) 2302071413 C) 2303312359

E) TERMINAL (TML) FREQ 120.6MHZ AND 335.9MHZ U/S

USE FREQ 118.1MHZ AND 258.6MHZ)

(H0415/23 NOTAMR H0358/23

Q) CZQM/QCAAS/IV/B/E/000/999/4528N06624W200

A) CZQM B) 2302101235 C) 2302242359

E) MONCTON CENTRE PERIPHERAL STATION (PAL)

135.5MHZ AT FREDERICTON AND SAINT JOHN U/S)

(H0414/23 NOTAMR H0357/23

Q) CZQM/QCAAS/IV/B/E/000/180/4528N06624W200

A) CZQM B) 2302101235 C) 2302242359

E) MONCTON CENTRE PERIPHERAL STATION (PAL)

124.3MHZ AT FREDERICTON AND SAINT JOHN U/S)

## PRINCE EDWARD ISLAND

## AERODROME/FACILITY DIRECTORY

## CHARLOTTETOWN (QUEEN ELIZABETH HOSP) PE (Heli)

CDV3

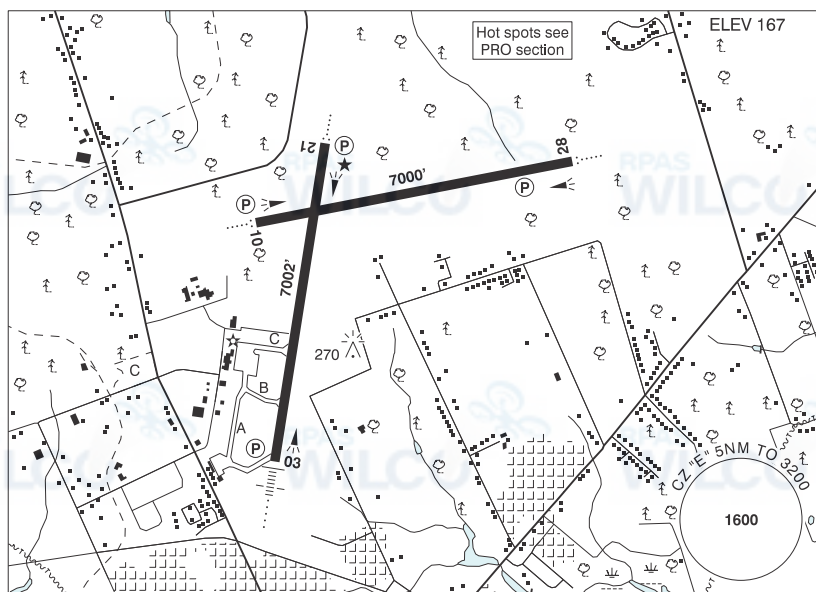
<b>REF</b>	N46 15 20 W63 05 56 Adj E 18°W (2014) UTC-4(3) Elev 20' A5003	
<b>OPR</b>	Queen Elizabeth Hosp 902-894-2031, 902-894-2032, 902-314-8128 Cert PPR	
<b>FLT PLN</b>		
<b>FIC</b>	London 866-WXBRIEF (Toll free within Canada) or 866-541-4104 (Toll free within Canada & USA)	
<b>ACC</b>	(IFR only) Moncton 506-867-7177 or 866-480-8200.	
<b>HELI DATA</b>	FATO/TLOF 78.7' dia ASPH Safety Area 105' dia Max heli overall length 52.5'	
<b>RCR</b>	Security 902-894-2001	
<b>LIGHTING</b>	RF(FH)	
<b>COMM</b>		
<b>RCO</b>	London rdo 123.55 (FISE) 126.7 (bcst)	
<b>MF</b>	Charlottetown rdo 118.0 5NM centred on Charlottetown land A/D 2.3NM SE 3200 ASL (CAR 602.98)	
<b>PRO</b>	Arr/dep 164° fr heli, slope 12% (H2)	
<b>CAUTION</b>	140' unlighted Power Plant stacks 250' NE of heli.	

## PRINCE EDWARD ISLAND

## AERODROME/FACILITY DIRECTORY

## CHARLOTTETOWN PE

CYYG



<b>REF</b>	N46 17 21 W63 06 55 3N 18°W (2014) UTC-4(3) Elev 167' A5003 LO8 HI6 CAP OC
<b>OPR</b>	Charlottetown Airport Authority Inc. 902-566-7997 1015-0315Z± Cert O/T PN 902-394-4168
<b>PF</b>	A-1,2,3,6,7,8 C-4,5
<b>CUST</b>	AOE/60 (368 with staged off-loading) 888-226-7277 12-04Z±
<b>FLT PLN</b>	<p><b>FIG</b> London 866-WXBRIEF (Toll free within Canada) or 866-541-4104 (Toll free within Canada &amp; USA)</p> <p><b>ACC</b> (IFR only) Moncton 506-867-7177 or 866-480-8200.</p> <p><b>WX</b> METAR H24. TAF H24, issue times: 00, 06, 12, 18Z.</p>
<b>SERVICES</b>	Call out chg may be levied for one or more svcs.
<b>FUEL</b>	100LL 11-01Z± ctc 902-394-4168, JA-1 (FSII avbl) 09-00Z± O/T call out chg will apply. Fax/tel: 902-566-3835. Duty tel: 902-629-0906 aft hr 902-393-1792
<b>OIL</b>	All
<b>S</b>	1,2
<b>ARFF</b>	PARTICIPATING CAT 5 (CAT 6 or 7, 2 hr PN) 1015-0315Z±, O/T call out chg.
<b>SUP FL</b>	D & A-ice
<b>MIL CON</b>	Aircraft Services International Group 902-566-3835
<b>RWY DATA</b>	Rwy 03(027°)/21(207°) 7002x150 ASPH Rwy 10(097°)/28(277°) 7000x150 ASPH RESA: 03/21 492'; 10/28 492'
<b>RWY CERT</b>	Rwy 03 RVR 1200(1/4sm)/Rwy 21 RVR 1200(1/4sm) AGN IV Rwy 10 RVR 1200(1/4sm) Day only/Rwy 28 RVR 1200(1/4sm) Day only AGN IV
<b>RCR</b>	Opr AMSCR
<b>LIGHTING</b>	03-AN(TE HI) P2, 21-AO(TE HI) P2, 10-AO(TE ME) P2, 28-AO(TE ME) P2

## PRINCE EDWARD ISLAND

AERODROME/FACILITY DIRECTORY

## CHARLOTTETOWN PE (Cont'd)

CYYG

## COMM

**RADIO** 118.0 (E) (emerg only 902-368-2210)  
**RCO** London rdo 123.55 (FISE) 126.7 (bcst)  
**MF** rdo 118.0 5NM 3200 ASL (CAR 602.98)  
**PAL** Moncton Ctr 135.65

## NAV

**VOR/DME** YYG 113.8 Ch 85 N46 17 52 W63 07 11 (206°)  
**ILS** IYG 110.9 (Rwy 03) RVR LOC reliable only within 10° either side of centreline.

## PRO

Caution during win ops: Twy C may be the only serviceable twy.  
 Pilots should refer to Canadian Airport Charts (CAC) to obtain details on established hot spots, prior to operating on maneuvering areas. CAC are available for free on the NAV CANADA website.



## PRINCE EDWARD ISLAND

## AERODROME/FACILITY DIRECTORY

## CABLE HEAD AIRPARK PE

CCA3

<b>REF</b>	N46 26 36 W62 35 29 1.5NW 18°W (2015) UTC-4(3) Elev 94' A5003	
<b>OPR</b>	J. G. Whitty 902-961-2311 Reg PN	
<b>PF</b>	C-1 D-2,3,4,5,6	
<b>FLT PLN</b>		
<b>FIC</b>	London 866-WXBRIEF (Toll free within Canada) or 866-541-4104 (Toll free within Canada & USA)	
<b>ACC</b>	(IFR only) Moncton 506-867-7177 or 866-480-8200.	
<b>RWY DATA</b>	Rwy 14(136°)/32(316°) 4196x100 TURF Rwy 07(075°)/25(255°) 3195x75 TURF	
<b>RCR</b>	Opr No win maint. Rwy soft dur spring thaw.	
<b>LIGHTING</b>	14-(TE LO) 32-(TE LO) ARCAL-123.2 Rwy 14/32 only (3 clicks on - 5 clicks off)	
<b>COMM</b>		
<b>ATF</b>	tfc 123.2 5NM 3100 ASL	
<b>CAUTION</b>	Marked p-line on Rwy 25 end.	

## NOVA SCOTIA

## AERODROME / FACILITY DIRECTORY

## FOX HARBOUR NS

CFH4

<b>REF</b>	N45 52 12 W63 27 40 1.5N 18°W (2018) UTC-4(3) Elev 62' A5003 LO8 HI6 RCAP	
<b>OPR</b>	Fox Harbour Development 902-257-1801/694-4311 Reg PPR	
<b>PF</b>	B-1,2,5 D-4	
<b>CUST</b>	AOE/CAN	
<b>FLT PLN</b>		
<b>FIC</b>	London 866-WXBRIEF (Toll free within Canada) or 866-541-4104 (Toll free within Canada & USA)	
<b>ACC</b>	(IFR only) Moncton 506-867-7177 or 866-480-8200.	
<b>SERVICES</b>	Call out chg may be levied for fuel	
<b>FUEL</b>	JA-1 Ltd hrs ctc opr	
<b>RWY DATA</b>	Rwy 15(143°)/33(323°) 4885x75 asphalt Thld 33 displ 80'	
<b>RCR</b>	Opr Ltd win maint	
<b>LIGHTING</b>	15-(TE ME), 33-(TE ME) P2 ARCAL-122.2 type K	
<b>COMM</b>		
<b>ATF</b>	UNICOM ltd hrs O/T tfc 122.2 5NM 3100 ASL	
<b>CAUTION</b>	<p><b>Trees:</b> Trees on apch to Rwy 15, 250' fr thld, 52' above thld elev.</p> <p><b>Hangar:</b> Hangar 37' high, 175' fr rwy.</p> <p><b>High Performance Acft:</b> Not recommended for use at ngt by high performance acft.</p> <p><b>Optical Illusion:</b> Due to relative width of rwy, acft may appear to be higher than actual on apch.</p> <p><b>Wildlife:</b> Be alert for wildlife on rwy.</p> <p><b>Turbulence:</b> Due adj trees, westerly winds may produce turbulence over rwy.</p>	